



# The Three Best Ways to Use Technology for Asset Security

# Three Tactics to Keep Your Assets Secure

Whether you are managing a fleet of 20 or a fleet of 20,000, keeping your vehicles and other assets secure is a top priority.

**Theft and unauthorised usage are two of the biggest issues to address when considering asset security.**

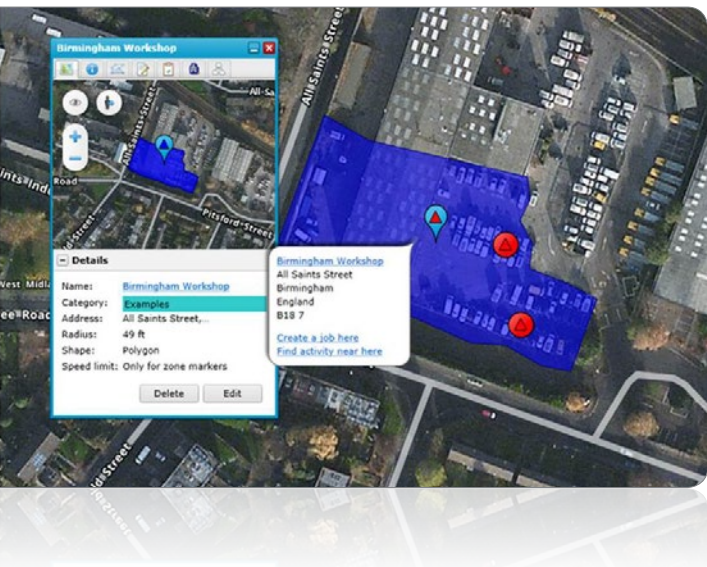
Not only do you want to prevent theft and eliminate unauthorised usage, but you also want to be prepared to recover from any incidents and minimise the costs of exposure. The best approach to asset security is one where you are covered from the outside-in. Under this plan major theft is prevented, isolated theft incidents are resolved quickly and your vehicles are being properly utilised for business use only. **An asset security plan that uses technology in addition to other human resources, processes and logistical considerations provides the highest levels of security, peace of mind and return on investment.**

The following pages cover three key ways to use technology to prevent and recover from theft and manage usage for optimum security.



# 1) Use location intelligence to prevent theft and save money in the process

On average, most fleet companies lose two to three vehicles per year due to theft. In 2013, it was reported that 77,583 vehicles were stolen and 383,723 thefts from vehicles were reported, according to The Society of Motor Manufacturers and Traders.



## Take a multi-pronged approach to prevent theft and enable quick recoveries.

There are a number of easy steps you can take to protect your assets against theft. Secure and properly light your lot, use security cameras and disable equipment at night. Many of these protocols are easily implemented even if they seem unimportant or excessive. Consider that **heavy equipment is nearly twice as likely to be stolen as it is to be in a collision.** According to the National Plant & Equipment Register more than £1 million worth of heavy equipment is stolen each week. In an analysis of rates

since 1990 only 6.5% of heavy equipment assets were recovered.

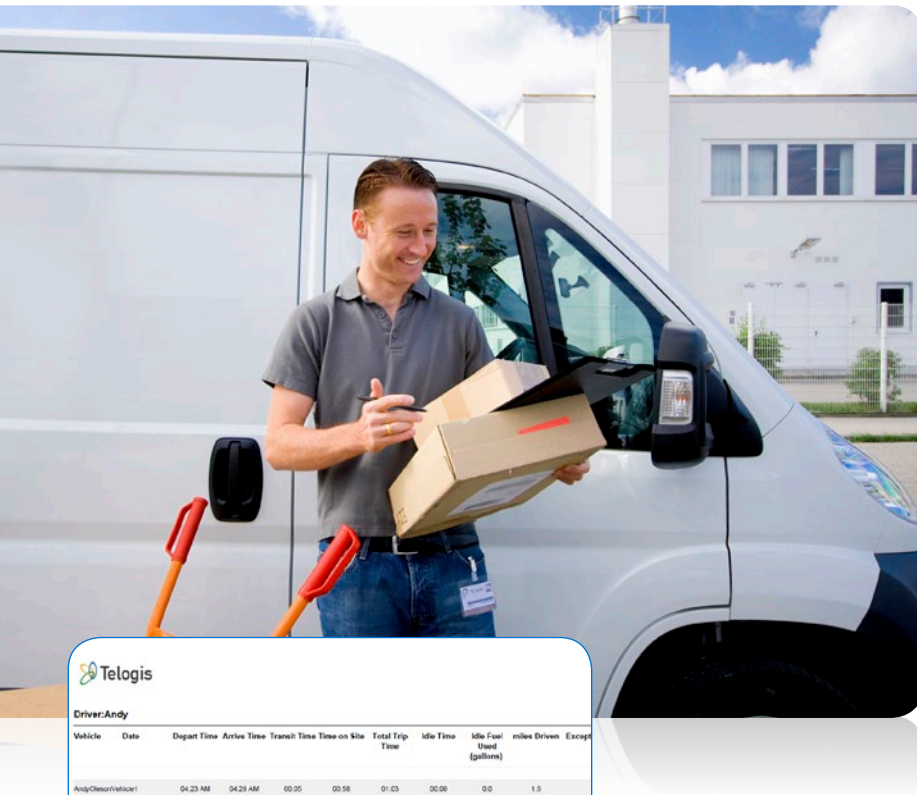
**Theft rates of mowers and tractors are even higher, and recovery rates are even lower.** When a company is able to recover a stolen asset quickly, any investments in time, resources and technology more than justify any initial investment.

There's also an **important place for technology** to not only help you deter theft, but also locate and recover stolen assets. While tracking devices on assets can be a deterrent, the use of advanced location intelligence solutions can even **allow you to set up alerts for when the location hardware unit is disabled or removed.** Additionally, **geofencing capabilities allow you to set up location boundaries for your vehicles equipment and powered/non-powered assets.** Should a vehicle move beyond the virtual fence you establish, alerts signal immediately so that law enforcement can be notified. When a vehicle or asset is stolen and reported, the more information and identifiers you can provide, the faster the recovery. The use of a location intelligence solution ensures that the information you have on file is up to date and easy to locate and share with the police, ensuring a **higher recovery rate.** This, in turn, helps you to reduce liability and avoid insurance premium increases.



## 2) Leverage location history to curb unauthorised delivery stops.

Once you feel that your assets are protected from outside theft, it's important to recognise that unauthorised use of your company's vehicles by your drivers can be another costly breach of security and drain on resources. If you're like many fleet managers, you've likely found yourself wondering if your teams are taking detours or driving miles out of their way on their daily deliveries. But the thought of reviewing all of the daily reports for each of your drivers to identify abnormal routes probably seems either impossible or a daunting task.



Advanced location intelligence solutions can make this task painless and **provide a detailed history report for up to hundreds of thousands of daily driver stops.** Create customised reports to show details that are of most interest, such as date and time of each stop, location information, whether the stop was authorised or not, and other details about duration and frequency of stops. **Easily identify unauthorised stops by setting markers noting important locations.** Accurately define areas of interest by setting markers of a pinpoint location with either a defined radius or even a polygon of points to allow for accurate reporting of vehicle location and duration at each stop.

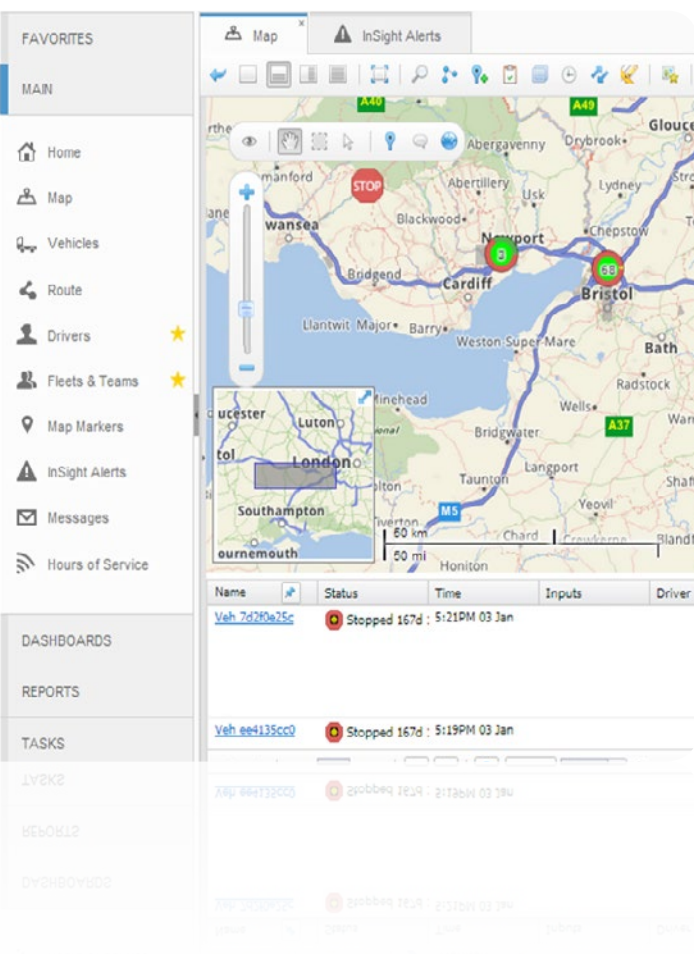
Vehicle	Date	Depart Time	Arrive Time	Transit Time	Time on Site	Total Trip Time	Idle Time	Idle Fuel Used (gallons)	miles Driven	Exception
Andy@Clear@vehicle1	04/23 AM	04:29 AM	00:05	00:58	01:03	00:06	0:0	1.5		
Andy@Clear@vehicle1	05:26 AM	05:49 AM	00:20	03:07	03:28	00:07	0:10	12.6	5760	
Andy@Clear@vehicle1	05:54 AM	05:57 AM	00:03	--	00:03	00:00	0:0	1.0		

Not only can you establish alerts so you can catch these issues early, but you also have the supporting data you need to address issues, improve driver behaviour and effectively decrease the number of unauthorised stops.

# 3) Set up alerts to help eliminate unauthorised usage before and after work.

Every minute your vehicles spend on the road increases exposure to potential accidents and impacts the maintenance timeline and cost of the vehicle. **If one of your employees gets into an accident in a company vehicle, even after hours, you are still liable** and accidents are costly - according to the Annual Report for Road Casualties released in 2012 by the Department for Transport the average cost per accident is £72,739, including all severities of cases, legal expenses, medical care, lost productivity and property damage.

How can you keep your employees from using your company vehicles for side jobs or personal use after business hours without your knowledge? **Real-time alerts** generated by location intelligence software can track your vehicles 24-hours a day **can help you visualise and virtually eliminate unauthorised vehicle use after hours.**



These alerts could include:

- Time based “curfew” alerts for any vehicle usage after a set time
- Location-based alerts for any time a vehicle leaves a set area away from driver’s home
- Mileage-based alerts for miles over a given allotment

Using technology is the simplest and fastest way to address this issue, and it’s highly effective when drivers are aware of the usage boundaries and know the consequences of abuse. This will help you establish a safer fleet and reduce your exposure to unnecessary liability after hours.

# Conclusion: Don't wait for a theft or an employee "borrowing" your vehicle to make a change.

Asset liability is a high enough risk under normal business-day usage. Not monitoring off hours location and usage of your assets can significantly increase your liability and costs. **The right location intelligence solution helps to combat theft, increase the chances of recovery and minimise unauthorised use through effective monitoring, data storing and reporting capabilities.** Should a theft occur, the recovery of just one asset using this technology can provide a significant return on investment. **Location intelligence technology can go a long way to helping secure your assets from unauthorised usage or theft, saving your business thousands of pounds annually in lost equipment, insurance costs and sleepless nights.**

## About Telogis

Telogis provides a cloud-based location intelligence software platform for companies that require route optimisation, real-time work order management, commercial navigation, telematics and mobile integration services for their mobile workforces.

Telogis is dedicated to enhancing the value of its customers' businesses through intelligent integration of location technology, information and services. Telogis was established in 2001 and is headquartered in Aliso Viejo, California, with offices in Europe and Latin America as well as development centers in Austin, Texas; Toronto; and Christchurch, New Zealand. Telogis' products and services are used and distributed in more than 100 countries worldwide. To learn more about Telogis, visit [www.telogis.co.uk](http://www.telogis.co.uk) or call: +44 (0) 203 005 8805.